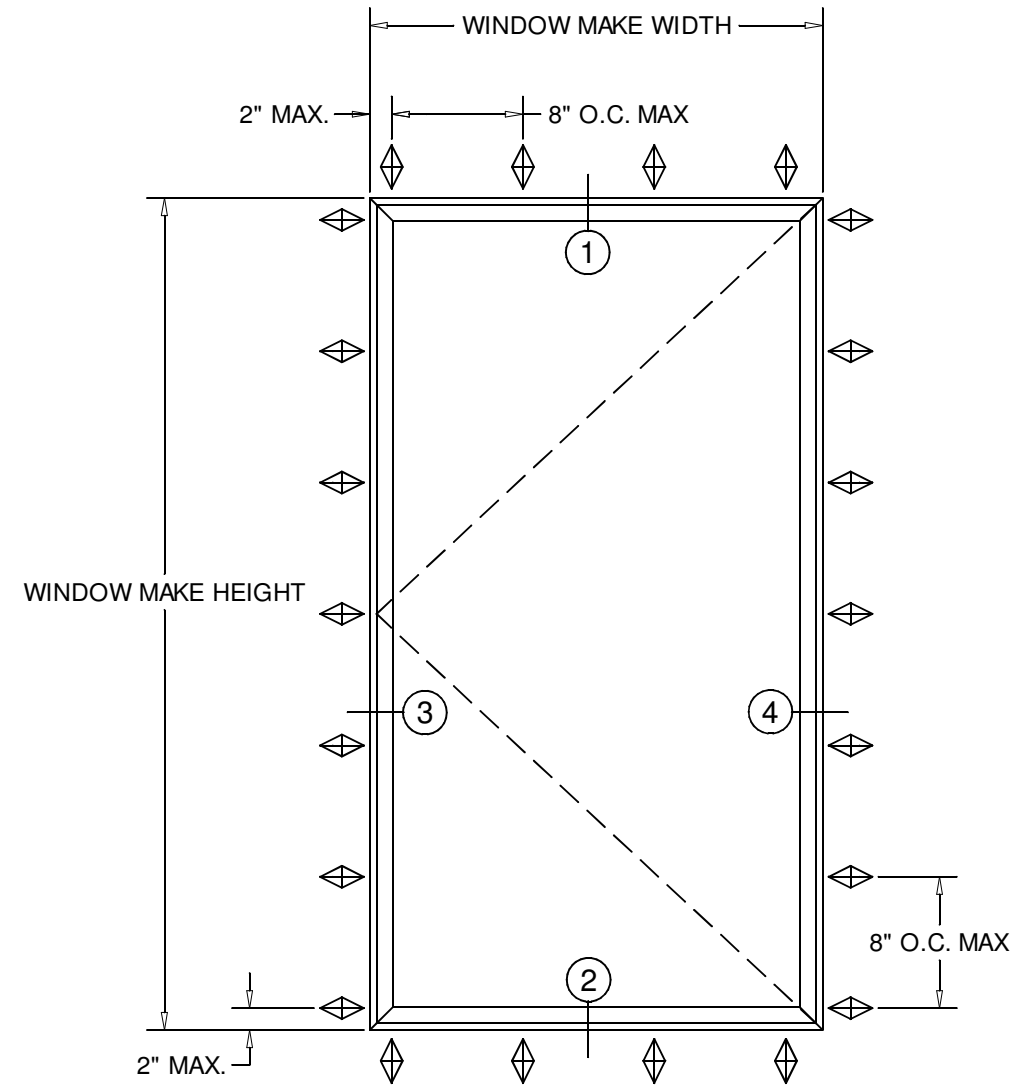


# NOTE: TYPICAL V300 O.S. CASEMENT VINYL WINDOW - NAIL FIN INSTALLATION



**Notes:**

1. Installations depicted satisfy the requirements of the 8th Edition (2023) of the Florida Building Code for Wind Pressures and Overall Sizes shown.
2. As Tested Anchor spacings are shown on the Elevations.
3. Wood Framing are assumed to S-P-F (G=0.42) or denser.
4. Maximum Frame Shim Space is 1/4" as shown. Shims shall be non-compressible and load bearing type.
5. Exterior and Interior shall be sealed according to Shop Drawings.
6. Products shown are Non-Impact Resistant and require Approved Protection Devices if used in Windborne Debris regions.
7. Not for use in High Velocity Hurricane Zone (HVHZ).

Maximum				
FW	FH	DLO-W	DLO-H	Pressure
36"	78"	29 5/16"	71 1/2"	± 50 PSF

1" Insulating Glass  
Two lights 3/16" Annealed Glass  
with 1/2" Spacer

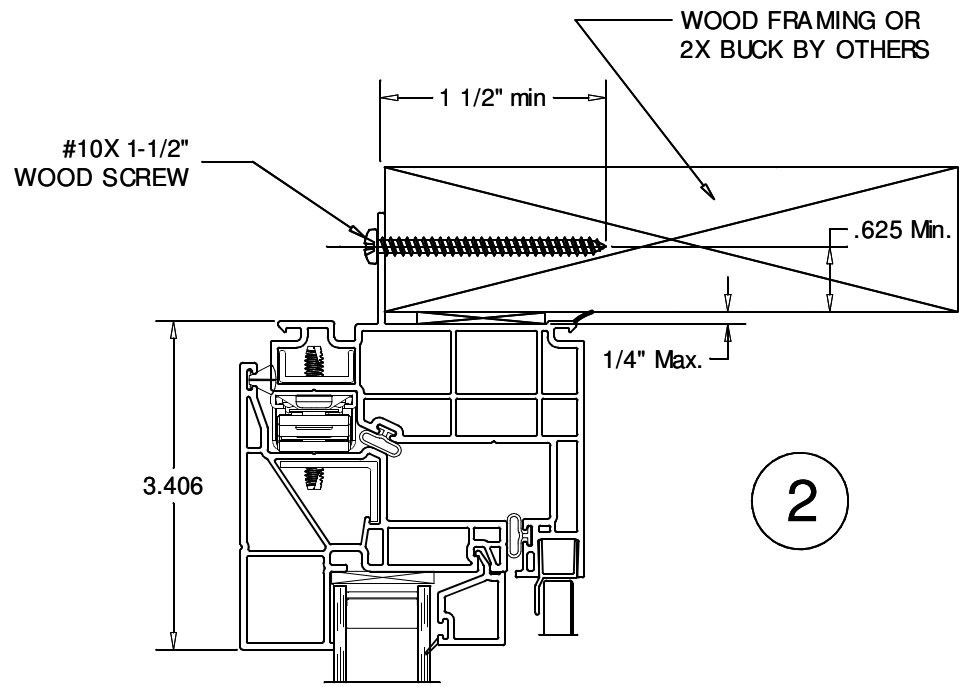
Project Name: **V300 O.S. CASEMENT NAIL FIN**  
**Installation Instructions**

**GENERAL NOTES**

QUAKER WINDOW PRODUCTS WILL NOT BE RESPONSIBLE FOR FIELD MEASUREMENT QUANTITIES, & INSTALLATION DESIGN. CONTRACTOR MUST VERIFY ALL DIMENSIONS.

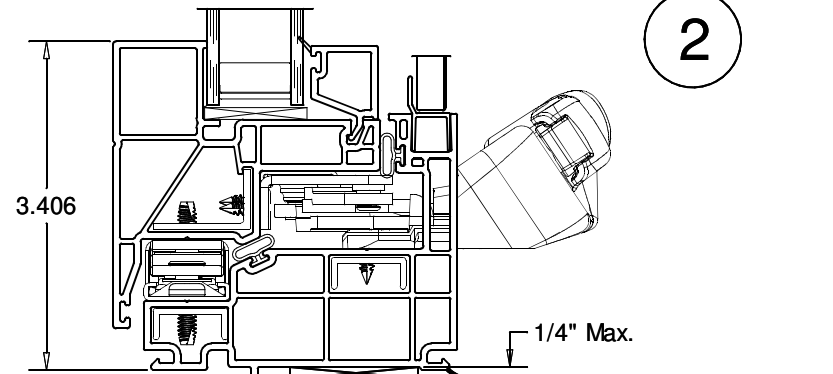
	PHONE (573)-744-5211 FAX (573)-744-5586 COMMERCIAL FAX (573)-744-5822 www.quakerwindows.com	Scale: <b>NONE</b>	Sheet #: <b>1 of 2</b>
	Drawn By: <b>Bud</b>	504 Highway 63 South Freeburg, MO 65035 drafting@quakerwindows.com	Date: <b>07-10-2023</b>

# NOTE: TYPICAL V300 O.S. CASEMENT VINYL WINDOW - NAIL FIN INSTALLATION



EXTERIOR

INTERIOR



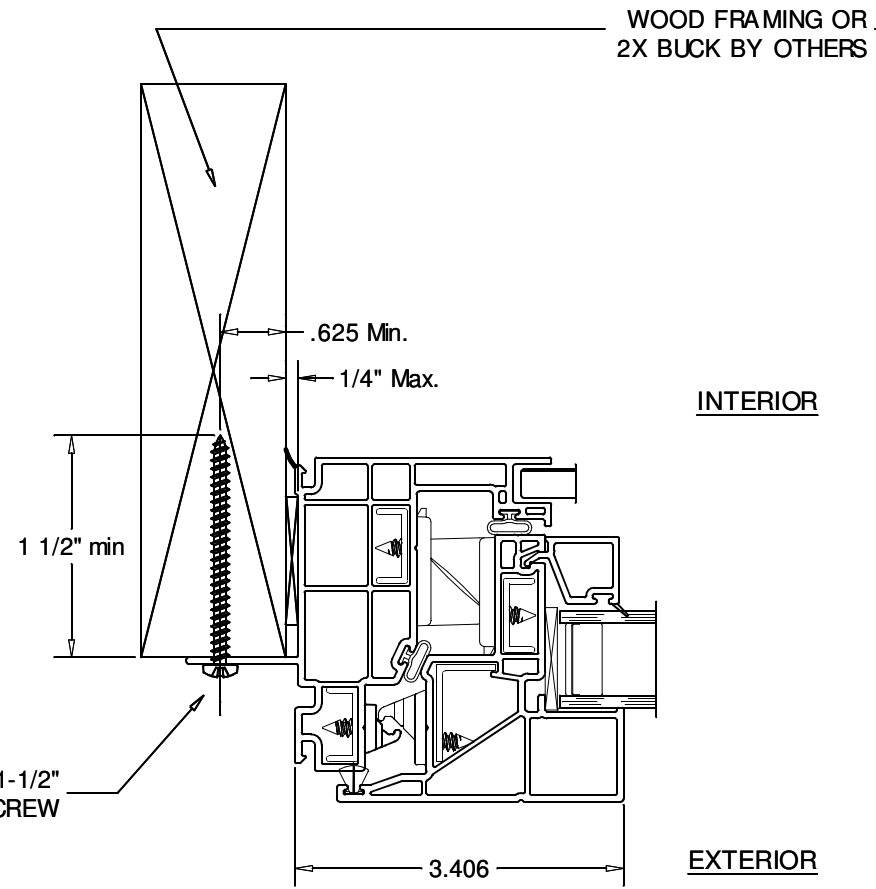
#10 X 1-1/2"  
WOOD SCREW

VERTICAL SECTION DETAIL

WOOD FRAMING INSTALLATION

WOOD FRAMING OR  
2X BUCK BY OTHERS

3



WOOD FRAMING OR  
2X BUCK BY OTHERS

INTERIOR

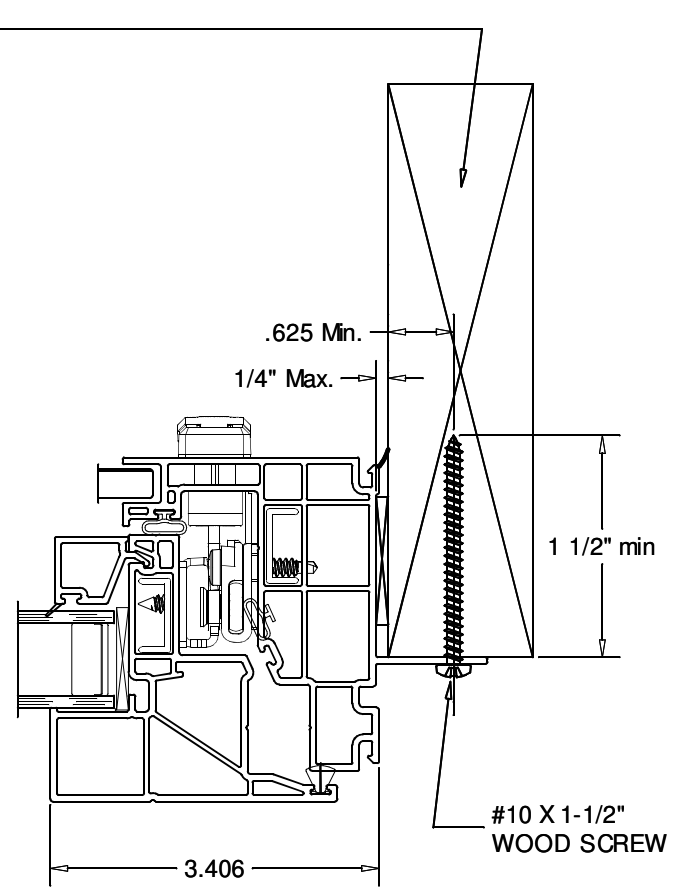
EXTERIOR

#10 X 1-1/2"  
WOOD SCREW

HORIZONTAL SECTION DETAIL

WOOD FRAMING INSTALLATION

4



#10 X 1-1/2"  
WOOD SCREW

## GENERAL NOTES

Description:

QUAKER WINDOW PRODUCTS  
WILL NOT BE RESPONSIBLE  
FOR FIELD MEASUREMENT,  
QUANTITIES, & INSTALLATION  
DESIGN. CONTRACTOR MUST  
VERIFY ALL DIMENSIONS.

PHONE (573)-744-5211  
FAX (573)-744-5586

COMMERCIAL  
FAX (573)-744-5822  
www.quakerwindows.com

**QUAKER**  
COMMERCIAL WINDOW AND DOOR

Scale: NONE  
504 Highway 63 South  
Freeburg, MO 65035  
drafting@quakerwindows.com

Drawn By: Bud  
Date: 07-10-2023

Sheet #: 2 of 2

Project Name:  
**V300 O.S. CASEMENT**

**NAIL FIN**  
Installation Instructions